

Description

The HTH8G07P600H(B) is an unmatched discrete LDMOS Power Amplifier with 600W saturated output power covering frequency range from 1.8 - 700 MHz.

Features

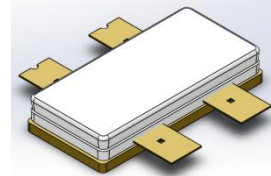
- Operating Frequency Range: 1.8 - 700 MHz
- Operating Drain Voltage: +50V
- Saturation Output Power: 600W
- Internally Unmatched device
- Excellent thermal stability due to low thermal resistance package
- Enhanced robustness design without device degradation
- Internally integrated enhanced ESD design

Applications

- Analog and Digital Broadcasting
- Meteorological and Aviation Radar
- Private network communication base station
- Industrial Scientific Medical (ISM)
 - Laser generation
 - Plasma generation
 - Particle accelerators
 - MRI, RF ablation and skin treatment
 - Industrial heating, welding and drying systems

Ordering Information

Part Number	Description
HTH8G07P600H(B)	Tray Package
HTH8G07P600H(B) EVB	470 - 700 MHz EVB

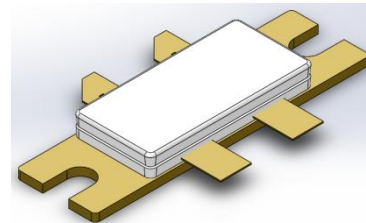


ACC2110S-4L

Earless Flanged balanced

Air Cavity Ceramic Package; 4 Leads

HTH8G07P600H



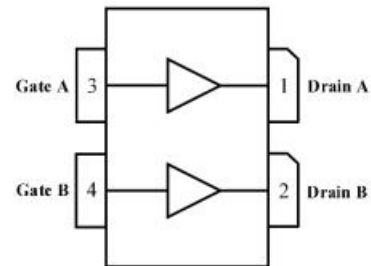
ACC2110B-4L

Flanged balanced

Air Cavity Ceramic Package; 4 Leads,

2 Mounting holes

HTH8G07P600HB



(Top View)

Note: Exposed backside of the package is the source terminal for the transistor

Pin Connections

Typical Performance

RF Characteristics (Pulsed-CW)

Freq (MHz)	Gain(dB)	P1dB (dBm)	Eff(%) @P1dB	P3dB (dBm)	Eff(%) @P3dB
470	19.88	57.21	52.92	58.45	58.67
500	19.57	57.68	56.74	58.62	60.59
550	19.63	57.81	61.86	58.59	64.74
600	19.47	57.49	62.80	58.15	64.28
650	19.06	57.27	55.92	57.94	57.05
700	19.35	57.95	55.94	58.58	57.49

Test conditions unless otherwise noted: 25 °C, VDD = +50Vdc, IDQ =500mA, PW = 100us, DC= 10% test on WATECH Application Board

Absolute Maximum Ratings

Parameter	Range/Value	Unit
Drain voltage (V _{DSS})	-0.5 to +110	V
Gate voltage (V _{GS})	-5 to +10	V
Operating Voltage (V _{DS})	0 to +50	V
Storage Temperature (T _{STG})	-55 to +150	°C
Junction Temperature (T _J)	-40 to +225	°C

Electrical Specification

DC Characteristics

Parameter	Conditions	Min	Typ	Max	Unit
Breakdown Voltage V _{(BR)DSS}	V _{GS} =0V, I _{DS} =180uA	110	-	-	V
Gate-Source Threshold Voltage V _{GS(th)}	V _{DS} =10V, I _{DS} =180uA	-	2.2	-	V
Drain Leakage Current I _{DSS}	V _{GS} =0V, V _{DS} =110V	-	-	10	uA
Gate Leakage Current I _{GSS}	V _{GS} =10V, V _{DS} =0V	-	-	1	uA

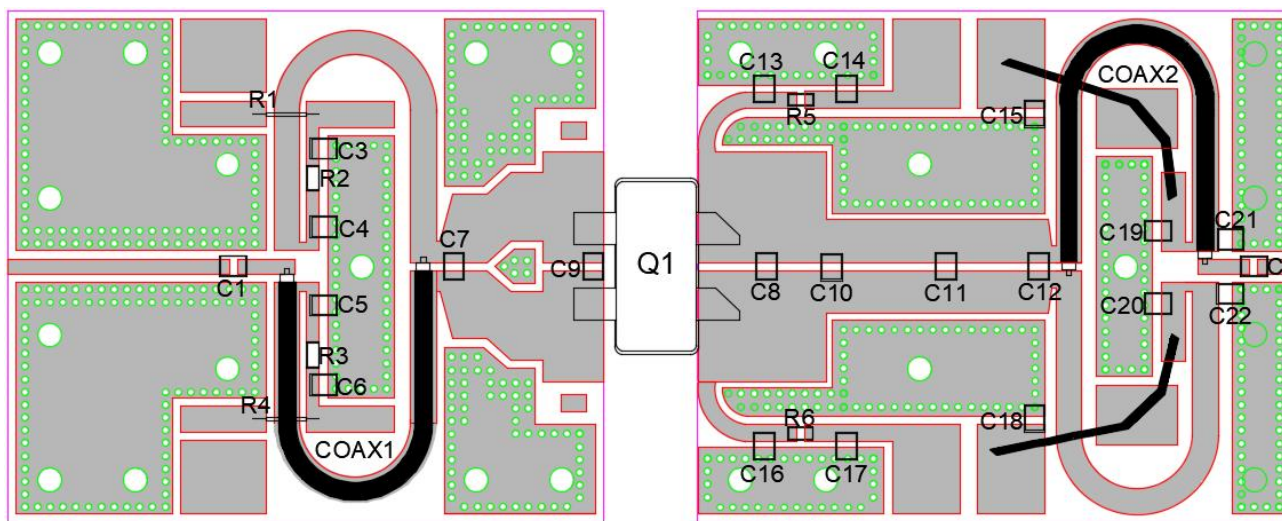
Load Mismatch Test

Condition	Test Result
VDD=50V, IDQ=500mA, Freq=470MHz, PL=600W, Pulse Signal, VSWR 10:1	No Device Degradation

Thermal Information

Parameter	Condition	Value (Typ)	Unit
Thermal Resistance Junction to Case (R _{TH})	VDD=50V, IDQ=500mA, T _{case} =25°C, Pulse Signal, P _{out} =49dBm (P _{avg} 39dBm)	0.6	°C /W

HTH8G07P600H(B) 470-700 MHz Reference Design



EVB Layout

Bill of Materials (BoM) - HTH8G07P600H(B) 470 - 700 MHz Reference Design

Reference	Value	Description	Manufacturer	P/N
Q1	-	LDMOS Power Transistor	Watech	HTH8G07P600H(B)
R1, R4	100 Ohm	100 Ohm	Wire resistor	
R2,R3	5.6 Ohm	5.6 Ohm	YAGEL	RC1210JR-075R6L
R5,R6	10 Ohm	10 Ohm	YAGEL	SR0805FR-4710RL
C1	39pF	39pF Chip Capacitors	ATC	ATC100B390JT
C3,C6,C21,C22	4.7uF	4.7uF Chip Capacitors	Murata	GCM32DC72A475KE02L
C7,C8	22pF	22pF Chip Capacitors	ATC	ATC100B220JT



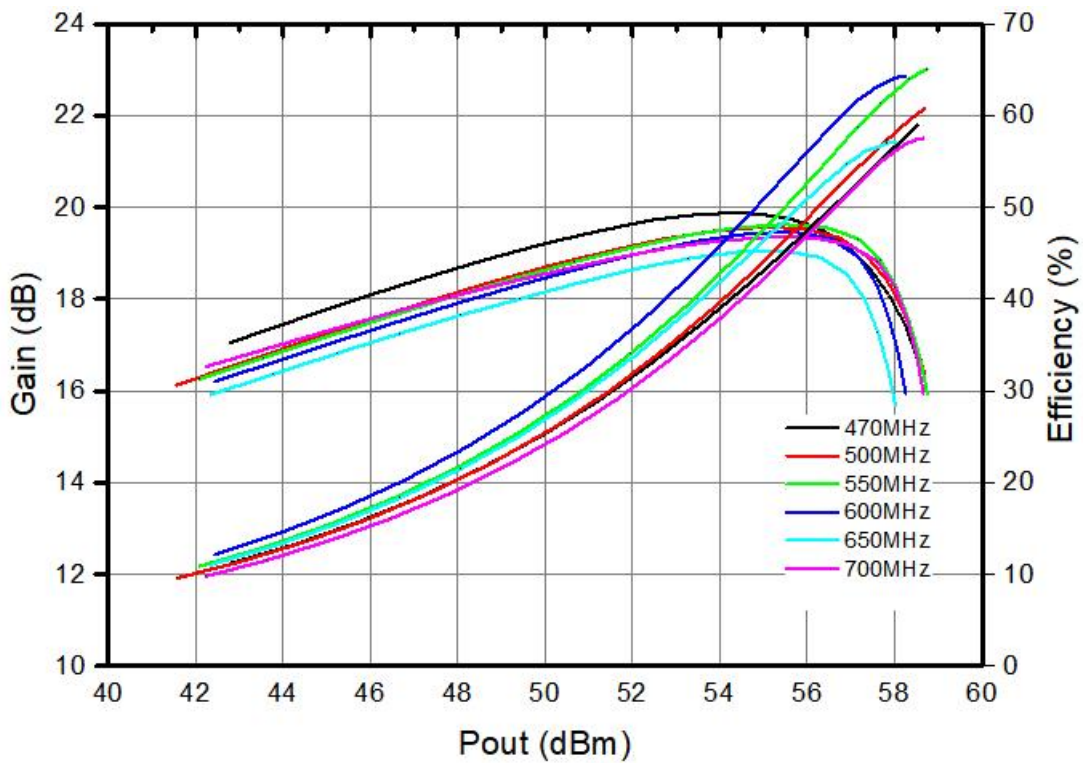
HTH8G07P600H(B)

600W, 1.8 - 700 MHz LDMOS Amplifier

Product datasheet

C9,C10	20pF	20pF Chip Capacitor	ATC	ATC100B200JT
C11	15pF	15pF Chip Capacitors	ATC	ATC100B150JT
C12	8.2pF	8.2pF Chip Capacitors	ATC	ATC100B8R2CT
C2,C4,C5,C13,C15,C16,C18,C19,C20	100pF	100pF Chip Capacitors	ATC	ATC800B100JT
C14,C17	10uF	10uF Chip Capacitors	Murata	GCM32EL8EH106KA07L
COAX1		25Ohm Coax, 70 mm 2:1	Arbitrary	Arbitrary
COAX2		25Ohm Coax, 80 mm 2:1	Arbitrary	Arbitrary
PCB	Rogers4350B(er=3.5), 30mil,35 μm (1oz)			

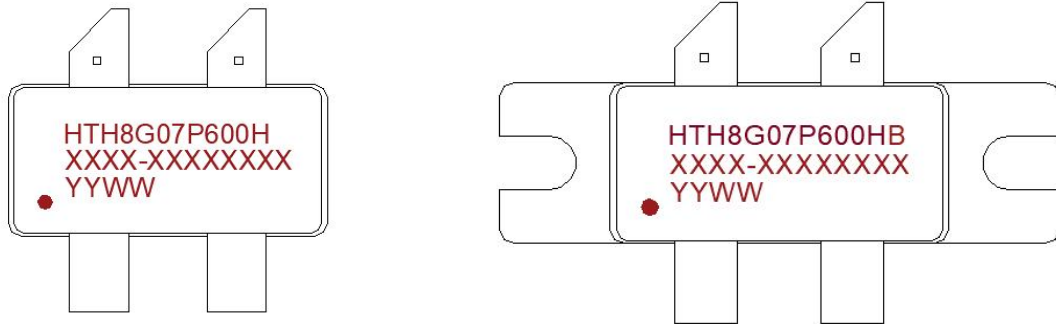
Performance Plots



Pulsed CW, Gain and Efficiency vs Pout

Test conditions unless otherwise noted: 25 °C, VDD = +50dc, IDQ= 500mA, PW = 1000us, DC= 10% test on WATECH Application Board

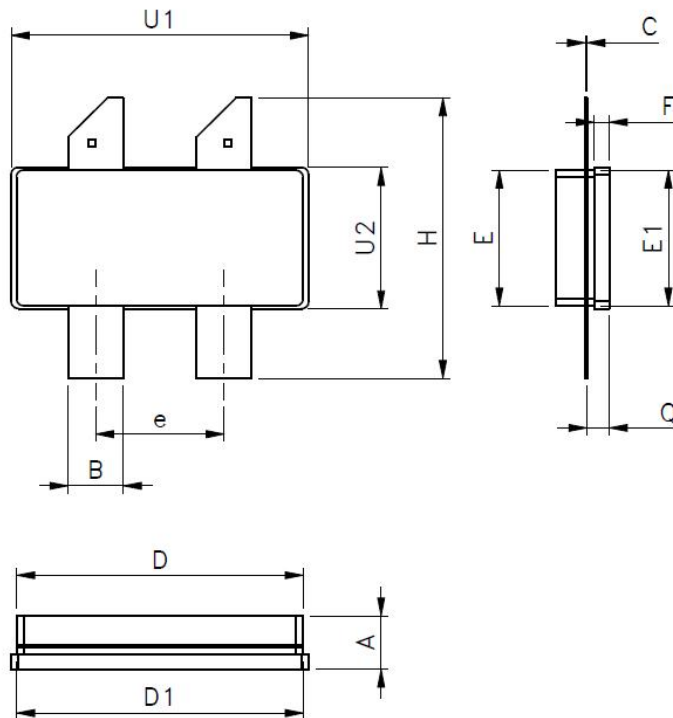
Package Marking and Dimensions



- Line1 (fixed): Device name in W/O
- Line2 (unfixed): Marking Lot No in W/O (Sample: E596-EERA0001)
- Line3 (unfixed): Date Code

This Marking SPEC only stipulates the content of Marking. For marking requirements such as font and size, please refer to the latest version of “Watech Product Printing Specification”

Marking

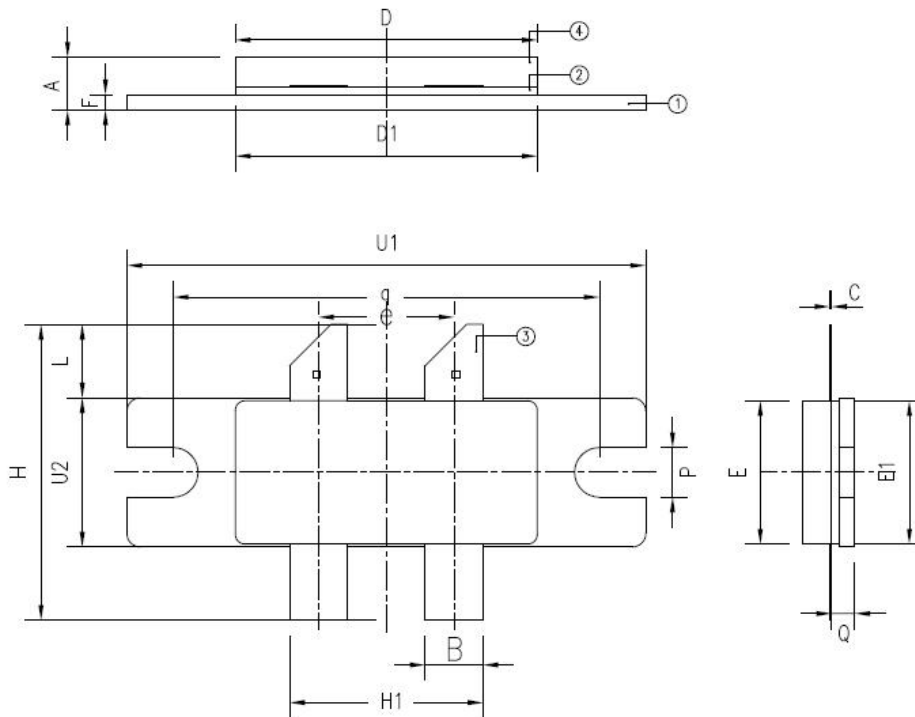


Symbol	Dimensions in Millimeters			Dimensions in Inches		
	Min.	Mon.	Max.	Min.	Mon.	Max.
A	3.12	3.69	4.26	0.123	0.145	0.168
B	3.69	3.81	3.93	0.145	0.150	0.155

C	-	0.11	-	-	0.004	-
D	19.61	19.81	20.01	0.772	0.780	0.788
D1	19.66	19.81	19.96	0.774	0.780	0.786
E	9.273	9.4	9.527	0.365	0.370	0.375
E1	9.28	9.4	9.52	0.365	0.370	0.375
F	0.95	1.02	1.09	0.037	0.040	0.043
H	19.38	19.43	19.48	0.763	0.765	0.767
Q	1.46	1.53	1.6	0.057	0.060	0.063
U1	20.51	20.58	20.65	0.807	0.810	0.813
U2	9.71	9.78	9.85	0.382	0.385	0.388
e	8.77	8.89	9.01	0.345	0.350	0.355

Package Dimensions

ACC2110S-4L Earless Flanged Ceramic Package; 4 leads



Symbol	Dimensions in Millimeters			Dimensions in Inches		
	Min.	Mon.	Max.	Min.	Mon.	Max.
A	3.55	3.71	3.86	0.140	0.146	0.152
B	3.68	3.81	3.94	0.145	0.150	0.155
C	0.04	0.11	0.18	0.002	0.004	0.007
D	19.61	19.81	20.01	0.772	0.780	0.788
D1	19.61	19.81	20.01	0.772	0.780	0.788
E	9.28	9.40	9.52	0.365	0.370	0.375

E1	9.28	9.40	9.52	0.365	0.370	0.375
F	0.95	1.02	1.09	0.037	0.040	0.043
H	18.93	19.43	19.93	0.745	0.765	0.785
H1	12.57	12.70	12.83	0.495	0.500	0.505
L	4.71	4.83	4.95	0.185	0.190	0.195
P	3.12	3.25	3.38	0.123	0.128	0.133
Q	1.43	1.53	1.63	0.056	0.060	0.064
q	-	27.94	-	-	1.10	-
U1	33.91	34.04	34.16	1.335	1.340	1.345
U2	9.71	9.78	9.85	0.382	0.385	0.388
e	-	8.89	-	-	0.35	-

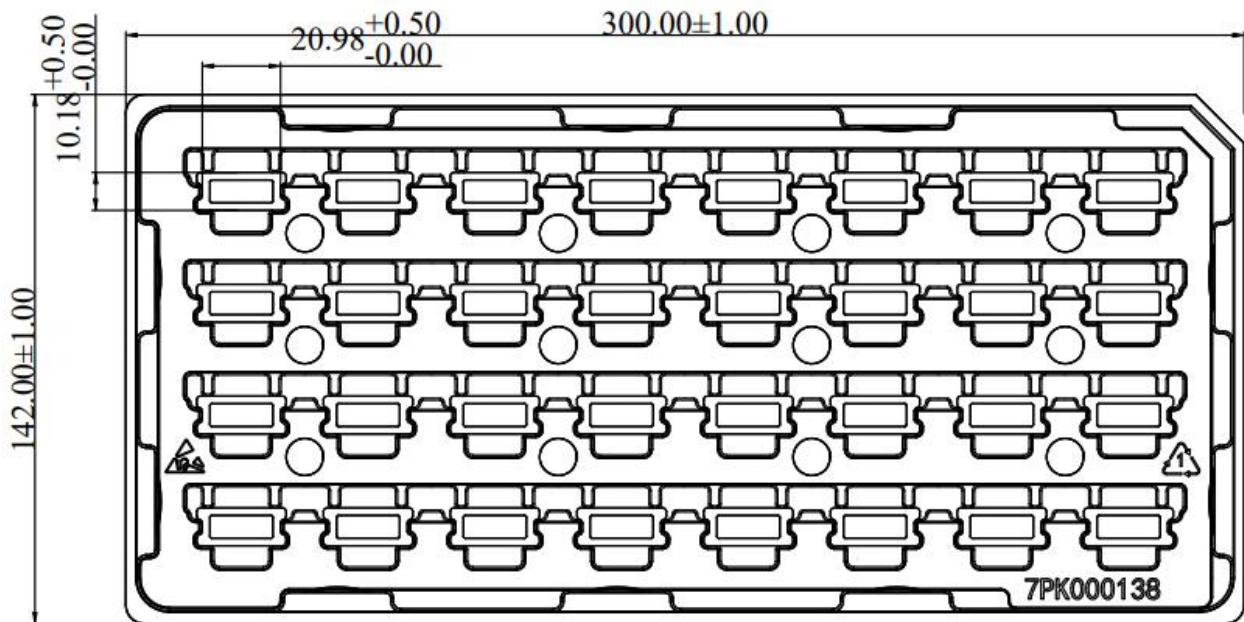
Package Dimensions

ACC2110B-4L Flanged Ceramic Package; 2 mounting holes; 4 leads

Packing Information

HTH8G07P600H:

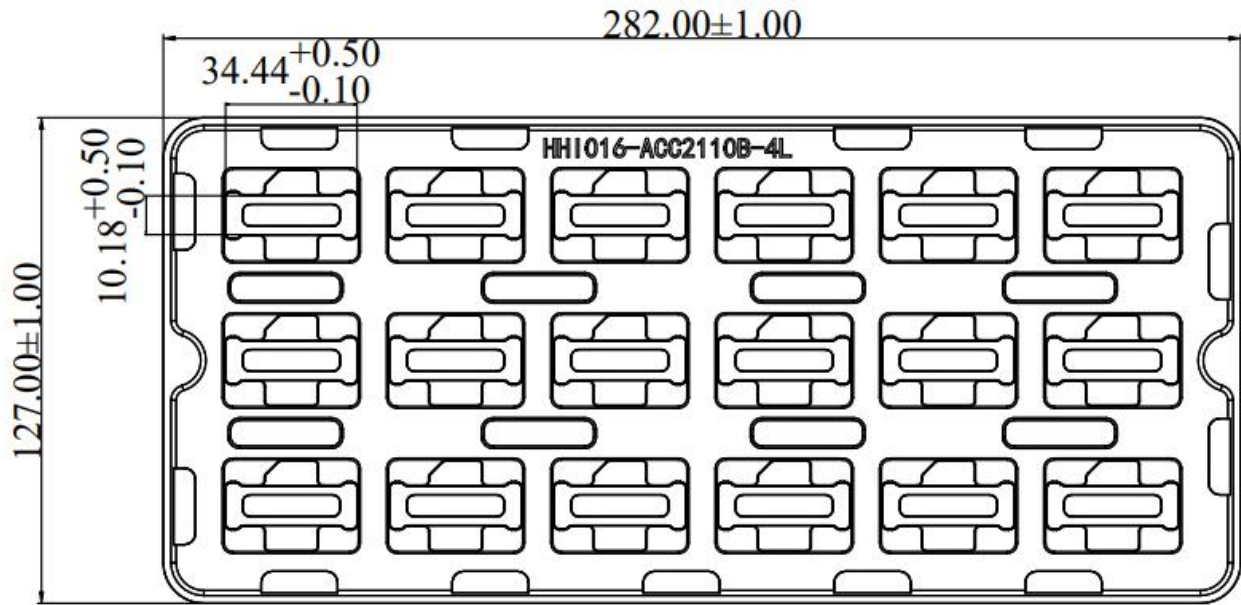
Package Type	Qty/Tray(pcs)	Qty/Box(pcs)	Qty/Carton(pcs)
ACC2110S-4L	32	160	960



Tray Packaging Descriptions

HTH8G07P600HB:

Package Type	Qty/Tray(pcs)	Qty/Box(pcs)	Qty/Carton(pcs)
ACC2110B-4L	18	90	540



Tray Packaging Descriptions

Handling Precautions

Parameter	Grade
Moisture Sensitivity Level MSL	3

Parameter	Rating	Standard	
ESD – Human Body Model (HBM)	Class 1B	JESD22-A114	
ESD – Human Body Model (MM)	Class A	EIA/JESD22-A115	
ESD – Charged Device Model (CDM)	Class III	JESD22-C101	

RoHS Compliance

This product is compliant with the 2011/65/EU RoHS directive (Restrictions on the Use of Certain Hazardous Substances in Electrical and Electronic Equipment), as amended by Directive 2015/863/EU.

Datasheet Status

Document status	Product status	Definition
Objective Datasheet	Design simulation	Product objective specification
Preliminary Datasheet	Customer sample	Engineering samples and first test results
Product Datasheet	Mass production	Final product specification



Abbreviations

Acronym	Definition
LDMOS	Laterally-Diffused Metal-Oxide Semiconductor
CW	Continuous Waveform

Revision history

Document ID	Datasheet Status	Release Date	Revision Version
Rev 0.1	Preliminary	August 2021	Initial version
Rev 0.2	Preliminary	August 2021	Correct package HTH8G07P600HB picture
Rev 0.3	Preliminary	March 2023	New format based on English version datasheet
Rev 1.0	Product	Sept. 2023	Update TBD information
Rev 1.1	Product	Dece. 2023	Update Frequency information
Rev 1.2	Product	March 2024	Version released after re review



HTH8G07P600H(B) 600W, 1.8 - 700 MHz LDMOS Amplifier

Product datasheet

Contact Information

For the latest specifications, additional product information, worldwide sales and distribution locations and information about WATECH:

- Web: www.watechelectronics.com
- Email: MKT@huatai-elec.com

For technical questions and application information:

- Email: MKT@huatai-elec.com

Important Notice

Information in this document is believed to be accurate and reliable. However, WATECH does not give any representations or warranties, expressed or implied, as to the accuracy or completeness of such information and shall have no liability for the consequences of use of such information.

“Typical” parameters are the average values expected by WATECH in large quantities and are provided for information purposes only. All information and specifications contained herein are subject to change without notice and customers should obtain and verify the latest relevant information before placing orders for WATECH products.

The information contained herein or any use of such information does not grant, explicitly or implicitly, to any party any patent rights, licenses, or any other intellectual property rights, whether with regard to such information itself or anything described by such information.

Applications that are described herein for any of these products are for illustrative purposes only. WATECH makes no representation or warranty that such applications will be suitable for the specified use without further testing or modification. Customers are responsible for the design and operation of their applications and products using WATECH products, and WATECH accepts no liability for any assistance with applications or customer product design. It is customer's sole responsibility to determine whether the WATECH product is suitable and fit for the customer's applications and products planned, as well as for the planned application and use of customer's third-party customer(s). Customers should provide appropriate design and operating safeguards to minimize the risks associated with their applications and products.

WATECH products are not designed, authorized or warranted to be suitable for use in life support, life-critical or safety-critical systems or equipment, nor in applications where failure or malfunction of a WATECH product can reasonably be expected to result in personal injury, death or severe property or environmental damage. This document as well as the item(s) described herein may be subject to export control regulations. Export might require a prior authorization from competent authorities.